

The undersigned has reviewed and takes responsibility for this design, and has the qualifications and meets the requirements set out in the Ontario Building Code to be a designer.

QUALIFICATION INFORMATION	
NAME	SIGNATURE
REGISTRATION INFORMATION	BCN
2125692 Ontario Inc.	40027
COMPANY	SIGNATURE
	BCN

REVISIONS					
NO.	DATE	DESCRIPTION	DRAWN	APPR.	
	FEB 6/12	ORIGINAL SUBMISSION PKG. (PREVIOUS DESIGNER)	G.C.	B.B.	
0	MARCH 12/12	REVISIONS ISSUED TO DEALER FOR BLDG. PERMIT	A.M.	B.B.	

DEALER:	MUSKALUM
CLIENT:	

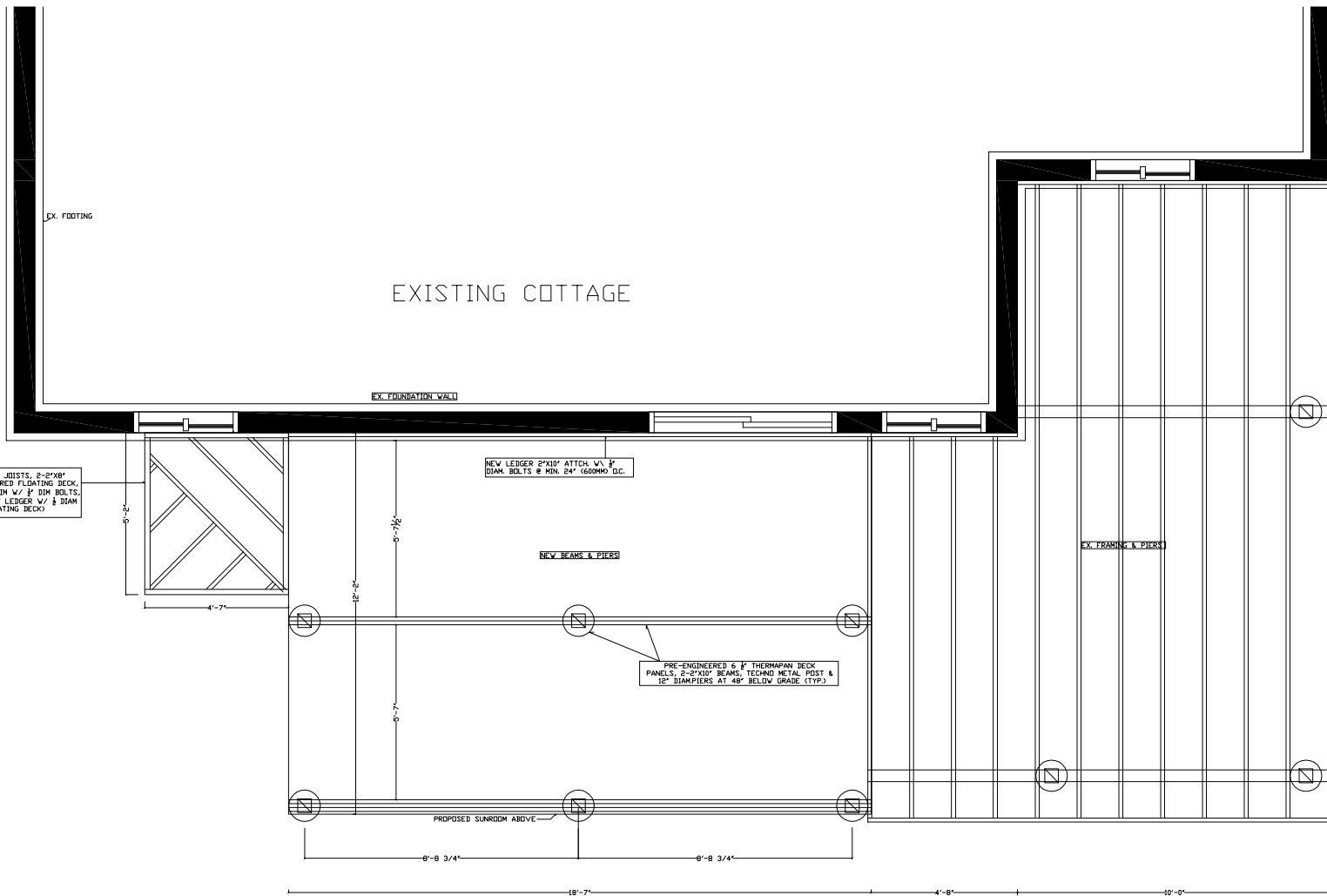
TITLE:	PROPOSED SUNROOM ADDITION & FLOATING DECK
DRAWING PREPARED BY:	WHALERJACK

**CraftBilt**  
Materials Ltd.

25 GREEN COURT  
AJAX, ON | TEL:(800)668-6430  
L1S 6W9 | FAX:(905)619-2468  
clive.fernandes@craft-bilt.com

FILENAME:	
DATE:	MARCH 7 2012
SCALE:	3/16" = 1' - 0"
DRAWN BY:	MM
CHKD. BY:	TM
DRAWING NO.:	A1
REVISION NO.:	1

Design has been carried out in accordance with Ontario Building Code 2006 requirements.



SUNROOM WALLS + ROOF DEAD LOAD	15 PSF
FLOOR DEAD LOAD	10 PSF
FLOOR LIVE LOAD (OBC TABLE 4.1.5.3.)	40 PSF
SNOW LOAD (OBC 9.4.2.2.)	20 PSF
SUNROOM / DECK DESIGN LOAD	85 PSF
<b>ALL LOADS ARE SPECIFIED UNLESS NOTED</b>	

The undersigned has reviewed and takes responsibility for this design, and has the qualifications and meets the requirements set out in the Ontario Building Code to be a designer.

QUALIFICATION INFORMATION			
NAME	SIGNATURE	39195	BCN
REGISTRATION	INFORMATION		
2125632 Ontario Inc.		40027	
COMPANY	SIGNATURE		BCN

REVISIONS				
NO.	DATE	DESCRIPTION	DRAWN	APPR.
	FEB 6/12	ORIGINAL SUBMISSION PKG. (PREVIOUS DESIGNER)	G.C.	B.B.
0	MARCH 12/12	REVISIONS ISSUED TO DEALER FOR BLDG. PERMIT	A.M.	B.B.

DEALER:	MUSKALUM
CLIENT:	

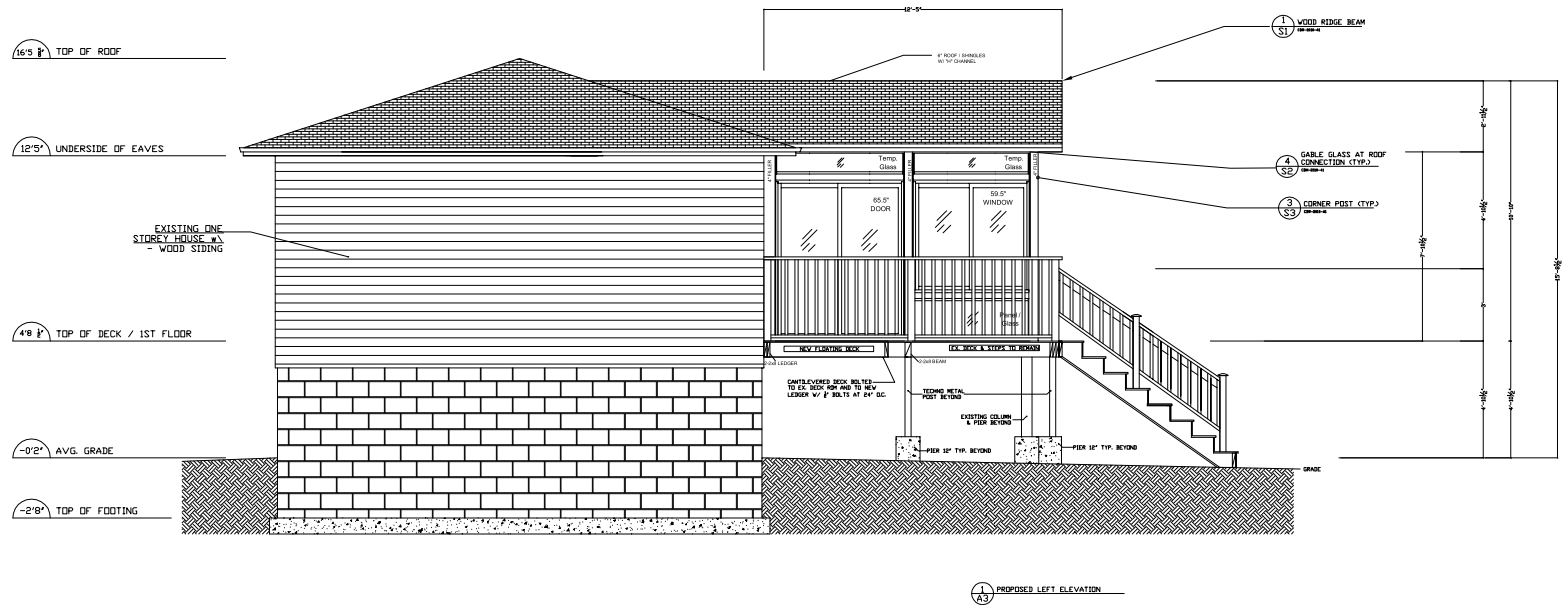
TITLE:	PROPOSED SUNROOM ADDITION & FLOATING DECK
DRAWING PREPARED BY:	WHALERJACK

**CraftBilt**  
Materials Ltd.

25 GREEN COURT  
AJAX, ON | TEL:(800)668-6430  
L1S 6W9 | FAX:(905)619-2468  
clive.fernandes@craft-bilt.com

FILENAME:	
DATE:	MARCH 7 2012
SCALE:	3/16" = 1' - 0"
DRAWN BY:	MM
CHKD. BY:	TM
DRAWING NO.:	A2
REVISION NO.:	1

Design has been carried out in accordance with Ontario Building Code 2006 requirements.



SUNROOM WALLS + ROOF DEAD LOAD	15 PSF
FLOOR DEAD LOAD	10 PSF
FLOOR LIVE LOAD (OBC TABLE 4.1.5.3)	40 PSF
SNOW LOAD (OBC 9.4.2.2)	20 PSF
SUNROOM / DECK DESIGN LOAD	85 PSF
<b>ALL LOADS ARE SPECIFIED UNLESS NOTED</b>	

The undersigned has reviewed and takes responsibility for this design, and has the qualifications and meets the requirements set out in the Ontario Building Code to be a designer.	
QUALIFICATION INFORMATION	
NAME	SIGNATURE
38135	BCN
REGISTRATION INFORMATION	
2125632 Ontario Inc.	40027
CJA Whalerjack	BCN
COMPANY	SIGNATURE

Design has been carried out in accordance with Ontario Building Code 2006 requirements.

REVISIONS				
NO.	DATE	DESCRIPTION	DRAWN	APPR.
	FEB 6/12	ORIGINAL SUBMISSION PKG. (PREVIOUS DESIGNER)	G.C.	B.B.
0	MARCH 12/12	REVISIONS ISSUED TO DEALER FOR BLDG. PERMIT	A.M.	B.B.

DEALER:	MUSKALIM
CLIENT:	

TITLE:	PROPOSED SUNROOM ADDITION & FLOATING DECK
DRAWING PREPARED BY:	WHALERJACK

**CraftBilt**  
Materials Ltd.

25 GREEN COURT  
AJAX, ON | TEL:(800)668-6430  
L1S 6W9 | FAX:(905)619-2468  
clive.fernandes@craft-bilt.com

FILENAME:	
DATE:	MARCH 7 2012
SCALE:	3/16" = 1' - 0"
DRAWN BY:	MM
CHKD. BY:	TM
DRAWING NO.:	A3
REVISION NO.:	1



SUNROOM WALLS + ROOF DEAD LOAD	15 PSF
FLOOR DEAD LOAD	10 PSF
FLOOR LIVE LOAD (OBC TABLE 4.1.5.3.)	40 PSF
SNOW LOAD (OBC 9.4.2.2.)	20 PSF
SUNROOM / DECK DESIGN LOAD	85 PSF
<b>ALL LOADS ARE SPECIFIED UNLESS NOTED</b>	

The undersigned has reviewed and takes responsibility for this design, and has the qualifications and meets the requirements set out in the Ontario Building Code to be a designer.

QUALIFICATION INFORMATION	
NAME	SIGNATURE
REGISTRATION INFORMATION	BCIN
2125832 Ontario Inc.	40027
COMPANY	SIGNATURE
OIA Whalerjack	BCIN

REVISIONS				
NO.	DATE	DESCRIPTION	DRAWN	APPR.
	FEB 6/12	ORIGINAL SUBMISSION PKG. (PREVIOUS DESIGNER)	G.C.	B.B.
0	MARCH12/12	REVISIONS ISSUED TO DEALER FOR BLDG. PERMIT	A.M.	B.B.

DEALER:	MUSKALUM
CLIENT:	

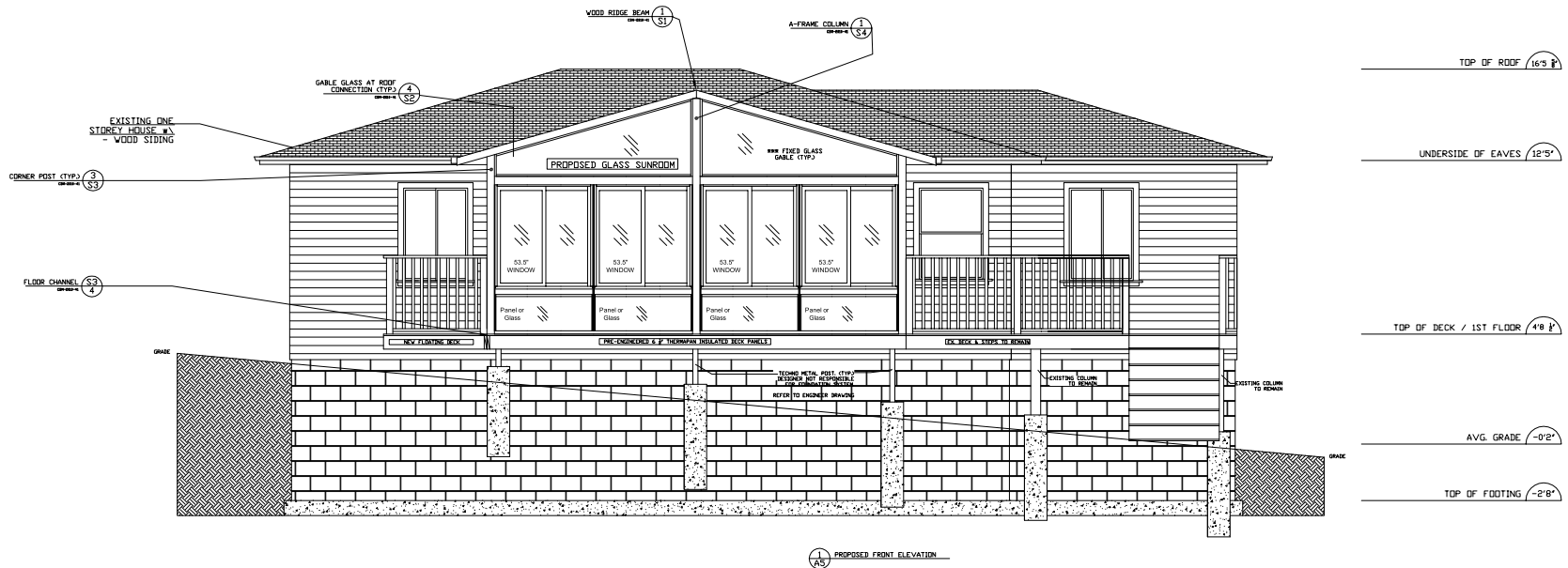
TITLE:	PROPOSED SUNROOM ADDITION & FLOATING DECK
DRAWING PREPARED BY:	WHALERJACK

**CraftBilt**  
Materials Ltd.

25 GREEN COURT  
AJAX, ON | TEL:(800)668-6430  
L1S 6W9 | FAX:(905)619-2468  
clive.fernandes@craft-bilt.com

FILENAME:	
DATE:	MARCH 12 2012
SCALE:	1/8" = 1' - 0"
DRAWN BY:	AM
CHKD. BY:	AM
DRAWING NO.:	A4
REVISION NO.:	1

Design has been carried out in accordance with Ontario Building Code 2006 requirements.



SUNROOM WALLS + ROOF DEAD LOAD	15 PSF
FLOOR DEAD LOAD	10 PSF
FLOOR LIVE LOAD (OBC TABLE 4.1.5.3.)	40 PSF
SNOW LOAD (OBC 9.4.2.2.)	20 PSF
SUNROOM / DECK DESIGN LOAD	85 PSF
<b>ALL LOADS ARE SPECIFIED UNLESS NOTED</b>	

The undersigned has reviewed and takes responsibility for this design, and has the qualifications and meets the requirements set out in the Ontario Building Code to be a designer.

QUALIFICATION INFORMATION	
NAME	SIGNATURE
38135	BCN
REGISTRATION INFORMATION	
2128033 Ontario Inc.	40027
COMPANY	SIGNATURE
BCN	

REVISIONS

NO.	DATE	DESCRIPTION	DRAWN	APPR.
	FEB 6/12	ORIGINAL SUBMISSION PKG. (PREVIOUS DESIGNER)	G.C.	B.B.
0	MARCH 12/12	REVISIONS ISSUED TO DEALER FOR BLDG. PERMIT	A.M.	B.B.

DEALER:	MUSKALUM
CLIENT:	

TITLE:	PROPOSED SUNROOM ADDITION & FLOATING DECK
DRAWING PREPARED BY:	WHALERJACK

**CraftBilt**  
Materials Ltd.

25 GREEN COURT  
AJAX, ON | TEL: (800) 668-6430  
L1S 6W9 | FAX: (905) 619-2468  
clive.fernandes@craft-bilt.com

FILENAME:	
DATE:	MARCH 12 2012
SCALE:	1/8" = 1' - 0"
DRAWN BY:	AM
CHKD. BY:	AM
DRAWING NO.:	A5
REVISION NO.:	1

Design has been carried out in accordance with Ontario Building Code 2006 requirements.